

MASTER PAVER



Concrete Pavers • Stone Pavers • Tiles • Garden Walls & Edging
Retaining Walls • Concrete Sleepers • Concrete Blocks • Wall Cladding

MASTER PAVER



BEST PRICE >>>
promise Terms and conditions apply.

FEATURES

- Smooth surface finish
- Slip resistant
- Easy to install
- Hardwearing
- Free samples available

SUITABLE FOR

- Entertaining areas
- Courtyards
- Patios and alfresco
- Pathways and walkways
- Stepping stones
- Garden pavers



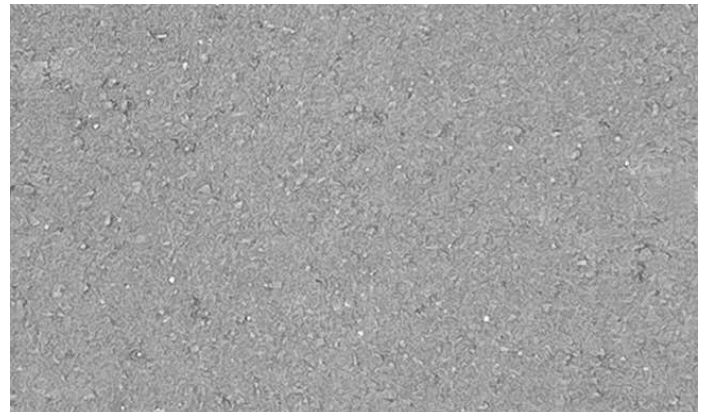
Specifications	Size	No. per m ²	Weight per m ²	m ² per pallet
Master Paver	400 x 400 x 40mm	6.25	85kg	17.28

COLOUR RANGE*

Sand



Charcoal



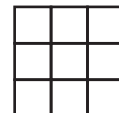
*Colours are an indication only. Always sight physical product colour samples before purchase.



www.australianpaving.com.au

  [australianpavingcentre](https://www.instagram.com/australianpavingcentre)

UNIFORM APPEARANCE



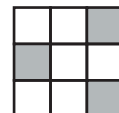
V1

SLIGHT APPEARANCE



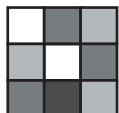
V2

MODERATE APPEARANCE



V3

SUBSTANTIAL APPEARANCE



V4