

# TEXTURED EASY LOCK BLOCK



Concrete Pavers • Stone Pavers • Tiles • Garden Walls & Edging  
Retaining Walls • Concrete Sleepers • Concrete Blocks • Wall Cladding

# TEXTURED EASY LOCK BLOCK



## FEATURES

- Near Vertical Walls
- Do it Yourself
- No Concrete Footings Required
- Lightweight, quick and easy installation
- Build unreinforced walls up to 800mm or higher with engineered design

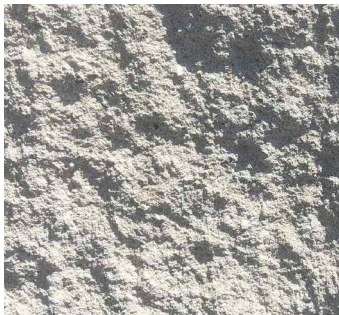
## SUITABLE FOR

- Straight and curved retaining walls
- Garden walls and beds
- Steps and firepits
- Terraced walls
- Boundary walls with fence on top

Specifications	Size (w x h x d)	No. per m <sup>2</sup>	Weight per unit	Units per pallet
Wall Block	390 x 200 x 225mm	12.8	23.33kg	75
Full Corner	340 x 200 x 145mm	N/A	16.63kg	96
Cap	200 x 60 x 225mm	N/A	5.35kg	300

## COLOUR RANGE\*

Opal White



Yellow Rock



Appin Stone



Charcoal



\*Colours are an indication only. Always sight physical product colour samples before purchase.



[www.australianpaving.com.au](http://www.australianpaving.com.au)

[f](#) [@](#) [australianpavingcentre](#)



## Retaining Wall Builder

Our builder helps you choose the right block for your project. Scan the QR code to get started.