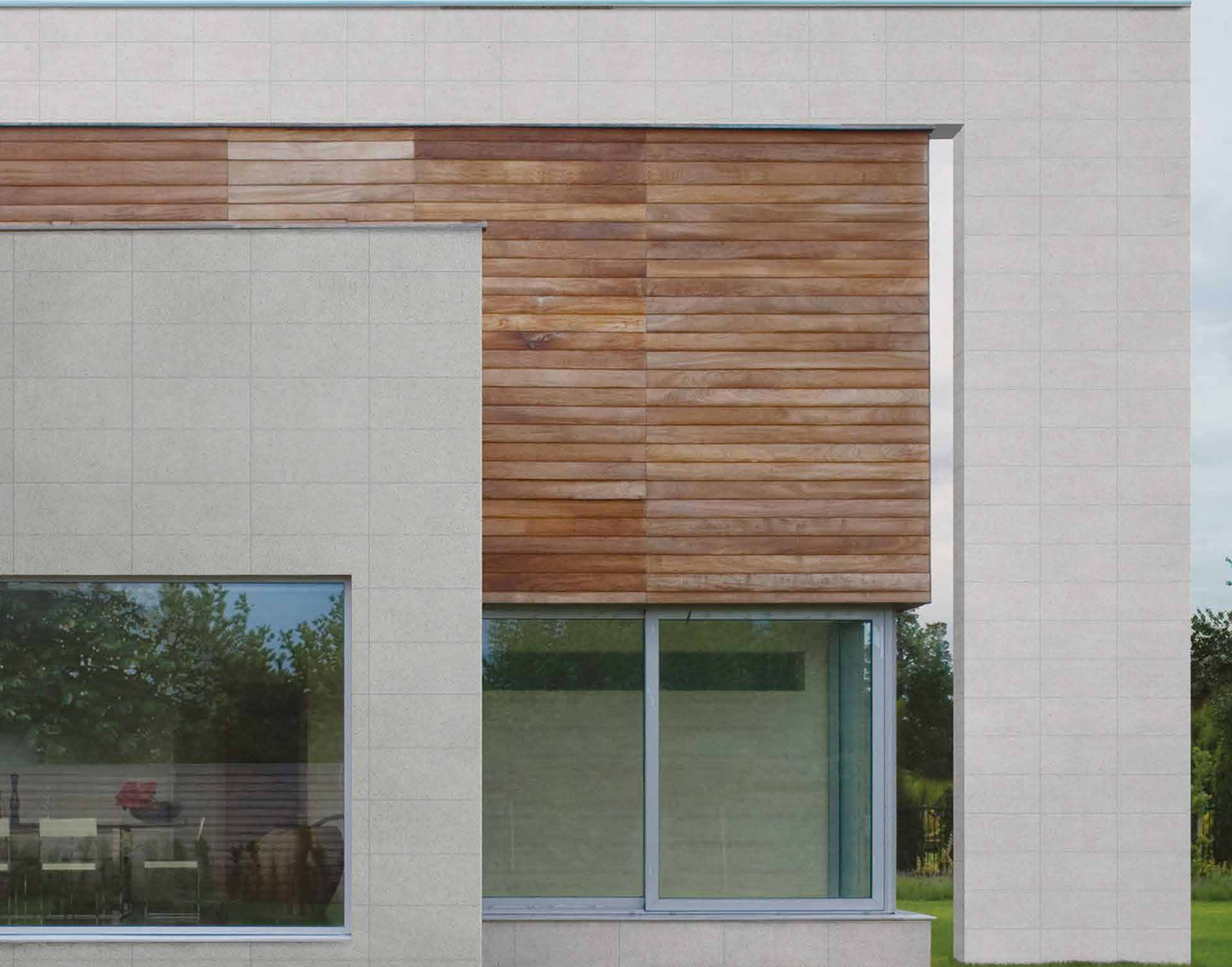


STONEWARE TERRAZZO SILVER PEARL



Concrete Pavers • Stone Pavers • Tiles • Garden Walls & Edging
Retaining Walls • Concrete Sleepers • Concrete Blocks • Wall Cladding

STONEWARE TERRAZZO SILVER PEARL



FEATURES

- Strong and durable
- Hardwearing
- Slip and stain resistant
- Free samples available

SUITABLE FOR

- Indoor and outdoor applications
- Pool areas
- Patios and alfresco
- Garden paths and walkways

| Specifications | Size (h x w x d) | No. per m ² | Slip Rating | Weight per m ² | m ² per pallet/unit |
|----------------|---------------------|------------------------|-------------|---------------------------|--------------------------------|
| Paver | 600 x 600 x 20mm | 2.78 | R11 | 45.83kg | 28.8 |
| Bullnose | 600 x 600 x 20mm | N/A | R11 | 16.5kg each | 80 units |
| 70mm Drop Face | 600 x 600 x 20/70mm | N/A | R11 | 18kg each | 64 units |

COLOUR RANGE*

Silver Pearl



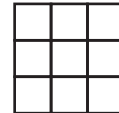
Due to natural resources used in production there are slight colour variations between batches. Pool copings can differ in appearance to the body tile and mixing 2 different sizes can end up with slight variations. Colour swatches are a guide only. Samples you receive may also be slightly different to what is received. Stoneware pavers should be laid with approximately 2-3mm gap to avoid chipping. This product has a V2 Variance rating. Please refer to the charts below.



www.australianpaving.com.au

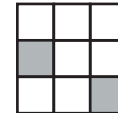
  [australianpavingcentre](https://www.instagram.com/australianpavingcentre)

UNIFORM APPEARANCE



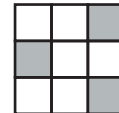
V1

SLIGHT APPEARANCE



V2

MODERATE APPEARANCE



V3

SUBSTANTIAL APPEARANCE



V4