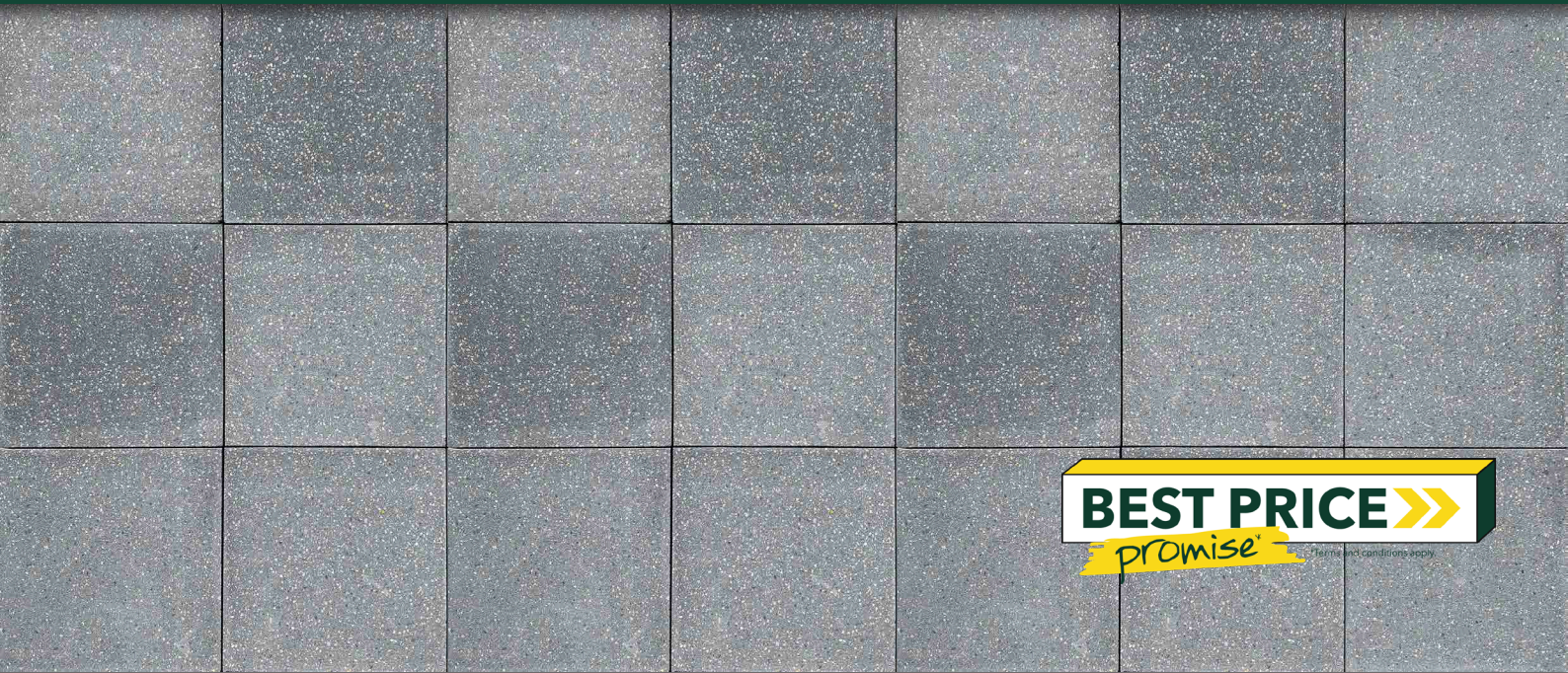


POLISHED STONE



Concrete Pavers • Stone Pavers • Tiles • Garden Walls & Edging
Retaining Walls • Concrete Sleepers • Concrete Blocks • Wall Cladding

POLISHED STONE



BEST PRICE >>>
promise terms and conditions apply

FEATURES

- Polished concrete pavers
- Smooth honed finish
- Low maintenance
- Easy to install
- Durable and hardwearing
- Free samples available

SUITABLE FOR

- Outdoor entertaining areas
- Patios and alfresco
- Pathways and walkways
- Stepping stones

Specifications	Size	No. per m ²	Weight per m ²	m ² per pallet
Polished Stone	400 x 400 x 40mm	6.25	89.18kg	18.7

COLOUR RANGE*

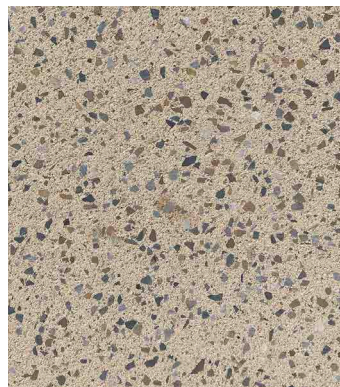
Mist



Natural



Limestone



Charcoal



*Colours are an indication only. Always sight physical product colour samples before purchase.



www.australianpaving.com.au

  [australianpavingcentre](https://www.instagram.com/australianpavingcentre)

UNIFORM
APPEARANCE



V1

SLIGHT
APPEARANCE



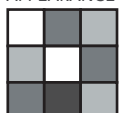
V2

MODERATE
APPEARANCE



V3

SUBSTANTIAL
APPEARANCE



V4